



Kis-PRODUKT

www.kisprodukt.com

AMBULANCE FURNITURE



MEDICAL FURNITURE

CONTENTS

- 01. Certificate ISO 9001:2015 and ISO 14001:2015
- 02. Certificate ISO 13485:2016
- 03. Examination tables
- 06. Physiotherapy tables
- 07. Gynaecological couches
- 07. Blood testing and dialysis chairs
- 08. Transport trolley
- 09. Infusion stands, tripod reflectors and negatoscopes
- 10. Various racks and carts
- 14. Medical chairs and tables
- 16. Screens and curtains
- 17. Cabinets
- 21. Shelves
- 22. Office chairs
- 23. Office furniture
- 26. Materials
- 28. Notes

CERTIFICATE



for the management system according to ISO 9001:2015 and ISO 14001:2015

The proof of the conforming application with the regulation was furnished and in accordance with certification procedure it is certified for the company

KIS PRODUKT d.o.o. Trn, Laktaši

Nikole Pašića bb
BiH - 78252 Trn

Scope

Development, manufacture, sale and installation of furniture (medical, office, school, hospital and retail) and other metal and wood products

Certificate Registration No.: TIC 15 100 179825
TIC 15 104 161433

Valid until: 2022-08-29
Valid from: 2019-08-30

Audit Report No.: 3330 2U5Z D0

This certification was conducted in accordance with the TIC auditing and certification procedures and is subject to regular surveillance audits.

TÜV Thüringen e.V.
Certification body for
systems and personnel



Jena, 2019-08-30



Deutsche
Akkreditierungsstelle
D-ZM-16006-05-01
D-ZM-16006-05-02



Original certificates
are branded with a hologram.

The current validity can be demanded at our homepage www.tuev-thueringen.de.

Zertifizierungsstelle des TÜV Thüringen e.V. • Ernst-Ruska-Ring 6 • D-07745 Jena • ☎ +49 3641 399740 • ✉ zertifizierung@tuev-thueringen.de

PCA
PARTNERS CERTIFICATE
ASSURANCE



Certificate

ISO 13485 : 2016

KIS PRODUKT d.o.o.

Nikole Pašić bb, 78252-Trn, Laktaši, BiH

This certificate shows that the medical devices - quality management system (EN ISO 13485:2016) of the above company was approved by PCA Certification for the following scope, the validity of the certificate depends on the company's pass the annual surveillance audits and company's maintenance the related management system conditions according to international accreditation criteria

SCOPE

Development, manufacture, sale and installation of medical furniture (hospital beds, pediatric beds, examination tables, gynecological examination tables, physiotherapy tables, blood testing and dialysis chairs, swaddling furniture, infusion stands, transport trolley, crane for the patient, chairs for patient transport, walkers)

GROUP CODE

M01

Certificate No	: TC-75088
Registration Date	: 12.11.2018
Reissue Date	: 18.12.2019
Expiry Date	: 11.11.2020
Certificate Period	: 3 Years (From the date of registration)
Exclusion	: 6.4.2/7.5.5/7.5.7/7.5.9.2



PCA Certification Approval

PCA Sertifikasyon Hizmetleri Limited Şirketi
Atalar Mah. Çanakkale Caddesi No:79 D:3 Kartal / İSTANBUL
Tel: +90 216 510 63 48-49 Pbx Faks: +90 216 517 63 49
www.pca-tr.com info@pca-tr.com

FR.86 Rev.4



Examination tables



LOW EXAMINATION TABLE

Product ID: 4001.101

Technical description

The bed is made of metal pipes Ø32 mm, plasticized in any color of your choice from the RAL color catalog. Part for lying (two section) is made from wood base coated with 50 mm thick and 32 kg/m³ densiti sponge, and covered with eco-leather in colour according to customer.

Dimensions: 1900x650x520(H) mm

Load capacity: 150 kg



Single-stage stool

Product ID: 4009.001

Technical description

The stool is made of metal pipes Ø25 mm, plasticized in any color of your choice from the RAL color catalog. The board is waterproof chipboard edged with 2 mm ABS tape, the steps are rubber coated.



HIGH EXAMINATION TABLE

Product ID: 4001.011

Technical description

The bed is made of metal pipes Ø32 mm, plasticized in any color of your choice from the RAL color catalog. Part for lying (two section) is made from wood base coated with 50 mm thick and 32 kg/m³ densiti sponge, and covered with eco-leather in colour according to customer.

Appendices: waste bin and paper holder.

Load capacity: 150 kg

Dimensions: 1900x650x780(H) mm

Weight: 36 kg



Two-stage stool

Product ID: 4009.011

Technical description

The stool is made of metal pipes Ø25 mm, plasticized in any color of your choice from the RAL color catalog. The board is waterproof chipboard edged with 2 mm ABS tape, the steps are rubber coated.



3-SECTION EXAMINATION TABLE

Product ID: 4001.400

Technical description

The bed is made of metal pipes Ø32 mm, plasticized in any color of your choice from the RAL color catalog. Part for lying (three section), with movable headboard, is made from wood base coated with 50 mm thick and 32 kg/m³ densiti sponge, and covered with eco-leather in colour according to customer.

Dimensions: 1850x570x750(H) mm

Load capacity: 150 kg

Weight: 30 kg



EXAMINATION TABLE, TILT

Product ID: 4001.200

Technical description

The bed is made of metal pipes Ø32 mm, plasticized in any color of your choice from the RAL color catalog. Part for lying (two section), with movable headboard, is made from wood base coated with 50 mm thick and 32 kg/m³ densiti sponge, and covered with eco-leather in colour according to customer.

Dimensions: 1900x600x750(H) mm

Load capacity: 150 kg

Weight: 30 kg



Examination tables



EXAMINATION TABLE - HIGH

Product ID: 4001.020

Technical description

The bed is made of square tubes 30x30 mm, plasticized in color of your choice. Part for lying down is a two-piece, movable headboard made of 50 mm thick coated foam with a thickness of 32 kg/m³, coated with easily washable eco-leather of choice.

Dimensions: 1900x650x780(H) mm

Load capacity: 150 kg

Weight: 35 kg



CARDIOLOGICAL EXAMINATION TABLE

Product ID: 4001.600

Technical description

The bed is made of square tubes 30x30 mm, plasticized in color of your choice. Part for lying down is a three-piece, with movable head and probe part, made of 50 mm thick coated foam with a thickness of 32 kg/m³, coated with easily washable eco-leather of choice.

Dimensions: 1900x650x520(H) mm

Load capacity: 150 kg

Weight: 40 kg



SWADDLING TABLE

Product ID: 4004.100

Technical description

It is made of Ø28 mm tubes, plastic coated in color of your choice. The bandage is made of a sponge-lined wooden base and is coated with easily washable eco-leather of choice. The bottom shelf is made of enriched 18mm chipboard.

Dimensions: 650x900x920(H) mm

Weight: 25 kg



SWADDLING AND WEIGHING TABLE

Product ID: 4004.001

Technical description

It is made of Ø28 mm tubes, plastic coated in color of your choice. The bandage is made of wood, coated with a sponge and coated with easily washable eco-leather of color of your choice. The bottom shelf is made of 18 mm polished chipboard.

Dimensions: 600x1200x920(H) mm

Weight: 27 kg





EXAMINATION TABLE - TWO PART

Product ID: 4005.001

Technical description

It is made of tubes 60x40, 50x30 and 30x20 mm, plasticized in the color of your choice. The reclining part is a two-piece, movable headboard made of 50 mm thick sponge with a thickness of 32 kg/m³, coated in easily washable eco leather in the color of your choice.

Dimensions: 1900x600x750(H) mm

Load capacity: 150 kg

Weight: 33 kg



EXAMINATION TABLE - TWO PART

Product ID: 4005.002

Technical description

It is made of tubes 80x40, 80x80, 40x40 and Ø25 mm, plasticized in color of your choice. The reclining part is a two-piece, movable headboard made of 50 mm thick sponge with a thickness of 32 kg/m³, coated with easily washable eco leather in the color of your choice.

Dimensions: 2000x650x750(H) mm

Load capacity: 150 kg

Weight: 43 kg



EXAMINATION TABLE - THREE PART

Product ID: 4005.100

Technical description

It is made of tubes 60x40, 50x30 and 30x20 mm, plasticized in the color of your choice. The reclining part is a three-piece, with a movable head and foot, made of a wooden surface coated with a sponge 50 mm thick and 32 kg/m³ and covered with easily washable eco leather in the color of your choice.

Dimensions: 1800x600x700(H) mm

Load capacity: 150 kg

Weight: 38 kg



EXAMINATION TABLE - adjustable heights

Product ID: 4005.010

Technical description

It is made of tubes 80x40, 60x30 and 30x30 mm, plasticized in the color of your choice. Lifting is done by a gas cylinder, and bringing the bed to its working position, at the appropriate height, by an electric motor with a manual control unit. The lounging section is two-piece, made of 50 mm thick sponge wood with a thickness of 32 kg/m³ and coated with easily washable eco-leather of choice.

Dimensions: 2000x660x450-950(H) mm

Load capacity: 150 kg

Weight: 60 kg



Physiotherapy tables



PHYSIOTHERAPY TABLE - 2 section

Product ID: 4001.500

Technical description

Metal construction coated with color of your choice. The reclining part is made of two parts made of 50 mm thick sponge with a thickness of 32 kg/m³, coated in easily washable eco leather of your choice.

Headboard: adjustment by gas damper from + 45° to -80°, with or without face openings

Height adjustment: electrical or hydraulic, 470-970 mm

Electric motor controls: manual control unit or foot switch

Hydraulic unit controls: foot switch

Dimensions: 2000x680x470-970(H) mm

Load capacity: 180 kg

Weight: 72 kg



PHYSIOTHERAPY TABLE - 3 section

Product ID: 4001.501

Technical description

Metal construction coated with color of your choice. The reclining part is made of two parts made of 50 mm thick sponge with a thickness of 32 kg/m³, coated in easily washable eco leather of your choice.

Headboard: adjustment by gas damper from + 45° to -80°, with or without face openings

Foot base: Adjustment by gas damper from 0° to + 80°

Height adjustment: electrical or hydraulic, 470-970 mm

Electric motor controls: manual control unit or foot switch

Hydraulic unit controls: foot switch

Dimensions: 2000x680x470-970(H) mm

Load capacity: 180 kg

Weight: 78 kg



PHYSIOTHERAPY TABLE - 6 section

Product ID: 4001.502

Technical description

Metal construction coated with color of your choice. The reclining part is a six-piece made of 50 mm thick sponge with a thickness of 32 kg/m³, coated in easily washable eco-leather of your choice.

Sections settings: gas shock absorbers and electric motor

Height adjustment: električno ili hidraulično, 470-970 mm

Electric motor controls: manual control unit or foot switch

Hydraulic unit controls: foot switch

Dimensions: 2050x680x470-970(H) mm

Load capacity: 180 kg

Weight: 86 kg



PHYSIOTHERAPY TABLE - BOBATH

Product ID: 4001.503

Technical description

Metal construction coated with color of your choice. The reclining part is made of two parts made of 50 mm thick sponge with a thickness of 32 kg/m³, coated in easily washable eco leather of your choice.

Headboard: adjustment with two gas dampers from + 45° to -30°, with or without face opening

Height adjustment: električno ili hidraulično, 470-970 mm

Electric motor controls: manual control unit or foot switch

Hydraulic unit controls: foot switch

Dimensions: 2000x1000x470-970(H) mm

Load capacity: 250 kg za elektromotor, 150 kg za hidraulični agregat

Weight: 102 kg



Gynaecological couches



GYNAECOLOGICAL TABLE

Product ID: 4000.300

Technical description

It is made of Ø32 mm tubes, plastic coated in color of your choice. The reclining part is a three-piece, with a movable head and foot, made of 50 mm thick sponge wood with a thickness of 32 kg/m³, coated with easily washable eco leather in the color of your choice. The leg rests are made of PVC and swivel around its axis. The pan is made of stainless steel.

Dimensions: 1850x570x750(H) mm

Load capacity: 150 kg

Weight: 31 kg



GYNAECOLOGICAL TABLE

Product ID: 4000.301

Technical description

It is made of square tubes 30x30 and 20x20 mm, plasticized in color of your choice. The reclining part is a three-piece, with a movable head and foot, made of 50 mm thick sponge wood with a thickness of 32 kg/m³, coated with easily washable eco leather in the color of your choice. The leg rests are made of PVC material and are rotatable around their axis. The pan is made of stainless steel.

Dimenzije: 1600x600x910(H) mm

Load capacity: 150 kg

Weight: 40 kg



Blood testing and dialysis chairs



BLOOD SAMPLE CHAIR

Product ID: 4005.200

Technical description

It is a made of Ø32 mm tubes, plastic coated in color of your choice. The reclining part is a three-piece, with movable head and foot, made of 50 mm thick sponge with a thickness of 32 kg/m³. The armrests are made of 50 mm thick, 32 kg/m³ dry lining and rotate about its axis. It is coated with easily washable eco-leather of color of your choice.

Dimensions: 1800x550x600(H)

Load capacity: 150 kg

Weight: 31 kg



BLOOD SAMPLE CHAIR

Product ID: 4005.201

Technical description

It is a made of 80x80, 50x30, 40x30, 30x30 and 30x20 mm tubes, plastic coated in your choice. The bearing part is a three-piece made of 50 mm thick, 32 kg/m³ sponge-coated wooden base. The armrests are made of 50 mm thick, 32 kg/m³ dry lining and rotate about their axis. It is coated with easy-to-wash eco-leather of color of your choice.

Dimensions: 1800x550x600(H) mm

Load capacity: 150 kg

Weight: 40 kg



Transport trolley



PATIENT TRANSPORT TROLLEY

Product ID: 4003.001

Technical description

made of tubes Ø32, Ø28 and Ø25 mm plastic coated in color. The leg support board is made of ribbed chipboard and is pulled out using ball sliders. Four wheels Ø150 mm. Two-wheel brake system.

Seat and backrest: plastic ISO or upholstered wooden scrap

Appendices: stalak za infuziju

Dimensions: 615x956x910(H) mm

Load capacity: 150 kg

Weight: 21 kg



RECUMBENCY PATIENT TRANSPORTER

Product ID: 4003.013

Technical description

They are made of pipes Ø32, Ø25 and Ø22 mm, plasticized in color of your choice. The reclining part is a two-piece, with adjustable head, made of 50 mm thick sponge wood and 32 kg / m³ thick, coated in easily washable eco leather of your choice. Four wheels Ø150 mm, the brake system is central. Corner bumpers are Ø100 mm.

Appendices: movable side rails, infusion stand, basket and oxygen bottle holder

Dimensions: 2200x680x820(H) mm

Load capacity: 180 kg

Weight: 50 kg



PATIENT TRANSPORTER, DOUBLE PART

Product ID: 4003.012

Technical description

They are made of Ø32 mm tubes, plastic coated in the color of your choice. The reclining part is a two-piece, movable headboard made of 50 mm thick sponge with a thickness of 32 kg / m³, coated in easily washable eco leather of your choice. They are made of two parts: a trolley and a removable reclining part. Four wheels Ø125 mm, two with brake.

Dimensions: 2040x540x820(H) mm

Load capacity: 150 kg

Weight: 40 kg



PATIENT TRANSPORTER - STRECHER

Product ID: 4003.014

Technical description

Made of pipes 50x40, 40x20, 30x30, Ø32, Ø28 and Ø25 mm, plastic coated in color. The bearing part is two-piece with welded mesh Ø4 mm. Corner bumpers are Ø100 mm. Four wheels Ø150 mm, the brake system is central.

Appendices: movable side railings

Regulation: The backrest is adjustable with a gas damper, and the height of the conveyor is 500 to 800 mm with a hydraulic pump driven by the foot pedal. Trendelburg (max 13 ° TR, max 9 ° RTR) with friction stop.

Dimensions: 2030x740x500-800(H) mm

The recumbent part: 1840x680 mm

Mattress: 100 mm (H)

Load capacity: 180 kg with Mattress

Weight: 100 kg



Infusion stands, tripod reflectors and negatoscopes



INFUSION STAND

Product ID: 4004.202

Technical description

Made of Ø25 and Ø18 mm pipes, stainless steel or plastic coated in choice. The stand is PVC star with wheels Ø50 mm. Four-fold infusion carrier.

Dimensions: Ø540x1600-2450(H) mm

Weight: 5 kg



REFLECTOR ON STAT

Product ID: 4009.201

Technical description

Made of Ø25 and Ø18 mm pipes, stainless steel or plastic coated in choice. The stand is PVC star with wheels Ø50 mm. Maximum height 1500 mm.

Dimensions: Ø540x1100-1500(H) mm

Weight: 5 kg



NEGATOSCOPE

Product ID:

4009.400 dimensions: 430x433x120 mm

4009.401 dimensions: 700x433x120 mm

4009.402 dimensions: 1200x433x120 mm

Technical description

Construction: Made of cold-rolled sheet plastic coated in the color of your choice, with white plexiglass front. Power supply is 230V, 50Hz with 18W led lamp and ON/OFF switch.



NEGATOSCOPE

Product ID:

4009.410 dimensions: 430x433x120 mm

4009.411 dimensions: 700x433x120 mm

4009.412 dimensions: 1200x433x120 mm

Technical description

Construction: Made of aluminum or stainless steel, with white plexiglass front. Power supply is 230V, 50Hz with 18W led lamp and ON/OFF switch.



Various racks and carts



CUP STAND

Product ID: 4004.510

Technical description

Construction: Made of Ø28 mm pipe, stainless steel or plastic coated. The stand is a chrome star with Ø50 mm wheels, a stainless steel bowl.

Dimensions: 630x892(H) mm

Weight: 6 kg



TWO CUP STAND

Product ID: 4004.511

Technical description

Construction: It is made of pipes 30x20 mm and Ø28 mm, stainless steel or plastic coated, with rubber wheels Ø50 mm, and two containers are made of stainless steel.

Dimensions: 650x950(H) mm

Weight: 6 kg



INSTRUMENT STAND

Product ID: 4004.600

Technical description

Construction: Made of 40x20, 30x20 and 25x25 mm pipes, stainless steel or plastic coated. Shelf is made of plastic or stainless steel sheet. It has three Ø50 mm rubber wheels.

Dimensions: 450x700x800-1150(H) mm

Load capacity: 20 kg

Weight: 10 kg



MAYO TABLE

Product ID: 4004.601

Technical description

Construction: They are made of stainless steel pipes 40x20 mm and Ø22 mm. The shelf is made of 1 mm stainless steel sheet.

Height adjustment by hydraulic cylinder. Four Ø50 mm rubber wheels, two with brake.

Dimensions: 600x400x850-1210(H) mm

Load capacity: 25 kg

Weight: 26 kg



Various racks and carts



INOX TROLLEY

Product ID: 4003.100

Technical description

Construction: They are made of stainless steel sheets 2 and 1 mm thick. Two shelves and a push handle. Four Ø50 mm rubber wheels, two with brake.

Dimensions: 500x700x820(H) mm

Load capacity: 25 kg

Weight: 11 kg



INOX TROLLEY

Product ID: 4003.101

Technical description

Construction: They are made of stainless steel sheets 2 and 1 mm thick. Three shelves and a push handle. Four Ø50 mm rubber wheels, two with brake.

Dimensions: 500x700x820(H) mm

Load capacity: 25 kg

Weight: 15 kg



INOX TROLLEY

Product ID: 4003.102

Technical description

Construction: They are made of stainless steel sheets 2 and 1 mm thick. Four shelves and a push handle. Four gauge wheel Ø50 mm, two with brake.

Dimensions: 500x700x1093(H) mm

Load capacity: 25 kg

Weight: 19 kg



INOX TROLLEY

Product ID: 4003.103

Technical description

Construction: Trolleys, made of stainless steel sheets 2 and 1 mm thick. Two shelves and a push handle. Four Ø75 mm rubber wheels, two with brake.

Dimensions: 600x900x850(H) mm

Load capacity: 25 kg

Weight: 20 kg



Various racks and carts



INOX TROLLEY

Product ID: 4003.104

Technical description

Construction: they are made of stainless steel sheets 2 and 1 mm thick. The carts have two shelves, one drawers, a trash container, a bottle holder and a push handle. Four Ø75 mm rubber wheels, two with brake.

Dimensions: 500x700x800(H) mm

Load capacity: 25 kg

Weight: 20 kg



INOX TROLLEY

Product ID: 4003.105

Technical description

Construction: They are made of stainless steel sheets 2 and 1 mm thick. The cart has two shelves, two drawers, one container and a push handle. Four Ø75 mm rubber wheels, two with brake.

Dimensions: 500x700x850(H) mm

Load capacity: 25 kg

Weight: 21 kg



INOX TROLLEY

Product ID: 4003.106

Technical description

Construction: They are made of stainless steel sheets 2 and 1 mm thick. The cart has three shelves, two drawers, one container and a push handle. Four Ø75 mm rubber wheels, two with brake.

Dimensions: 500x800x850(H) mm

Load capacity: 25 kg

Weight: 27 kg



INOX TROLLEY

Product ID: 4003.107

Technical description

Construction: They are made of stainless steel sheets 2 and 1 mm thick. The trolley has two shelves, a container, a bin, a bottle holder and a push handle. Four Ø75 mm rubber wheels, two with brake.

Dimensions: 600x900x800(H) mm

Load capacity: 25 kg

Weight: 20 kg





INSTRUMENTS TROLLEY

Product ID: 4003.202

Technical description

Construction: They are made of Ø25 and Ø18 mm pipes with two cold-rolled metal shelves with Ø8 mm bar fence, pasticated in color of your choice. They have four Ø50 mm rubber wheels, two with brake.

Appendices: inox cup

Dimensions: 500x700x828(H) mm

Load capacity: 40 kg

Weight: 17 kg



SERVICE TROLLEY

Product ID: 4003.300

Technical description

Construction: Made of Ø25 and Ø18 mm colored plastic coated pipes. The shelves are made of beige ultraplane edged with black ABS edgeband 2 mm, with bar fence Ø8 mm. They have four Ø75 mm rubber wheels, two with brake, two without.

Dimensions: 400x600x800(H) mm

Load capacity: 40 kg

Weight: 11 kg



EKG STAND

Product ID: 4004.501

Technical description

Construction: Made of Ø50 mm and Ø18 mm tubes and cold-rolled sheet shelf, color coated to your choice. The stand is PVC star with plastic wheels Ø50 mm.

Dimensions: 300x310x850(H) mm

Weight: 10 kg



STERILIZER TABLE

Product ID: 4004.300

Technical description

Construction: It is made of pipes Ø28 and Ø25 mm and oval pipes 30x15 mm, plasticized in color of your choice. The shelves are made of 2 mm edged ABS edging.

Dimensions: 500x700x800(H) mm

Load capacity: 150 kg

Weight: 15 kg



Medical chairs and tables



PATIENT'S CHAIR

Product ID: 4007.030

Technical description

Construction: Made of pipes $\varnothing 25$ and $\varnothing 42$ mm. The lifting and lowering of the seat is made possible by trapezoidal thread with a spindle. The seat base is wooden or wooden coated with a sponge and coated in the material and color as desired by the customer.

Dimensions: $\varnothing 350 \times 450 / 600$ (h) mm

Weight: 6 kg



PATIENT'S CHAIR

Product ID: 4007.003

Technical description

Construction: Chrome metal base with wheels $\varnothing 50$ mm, chrome gas cylinder. The seat is made of sponge-lined wooden base and coated in eco leather of your choice.

Dimensions: $\varnothing 350 \times 450 / 600$ (h) mm

Weight: 8 kg



DOCTOR'S CHAIR, ADJUSTABLE HEIGHT - MANUALLY

Product ID: 4007.001

Technical description

Construction: The frame is made of steel and 360° rotatable. The chair is height adjustable with gas shock absorber from 530 to 660 mm, ABS base with five legs $\varnothing 600$ mm, wheels $\varnothing 50$, rubberized with brake, seat $\varnothing 400$ mm, backrest 200 mm.

Dimensions: 600×530 mm

Weight: 10 kg



DOCTOR'S CHAIR, ADJUSTABLE HEIGHT - PEDAL

Product ID: 4007.004

Technical description

Construction: Polyurethane seat and backrest. Height adjustment, 450 to 710 mm, with gas cylinder, activated by foot. Wheels $\varnothing 50$ mm. Star diameter $\varnothing 620$ mm.

Weight: 12 kg



Medical chairs and tables



CHAIRS IN THE LOWER, TWO-SEATED WITH LATE FOR WRITING

Product ID: 4007.140

Technical description

Construction: Made of 60x40 mm tubes, color coated plastic of your choice. The seat and backrest are plastic, wooden or upholstered according to customer preference.

Dimensions: 1550x585x770(H) mm

Weight: 15 kg



CHAIRS IN THE LOW

Product ID:

4007.100 Dvosjed: 1040x585x770(H) mm

4007.101 Trosjed: 1550x585x770(H) mm

4007.102 Četverosjed: 2052x585x770(H) mm

4007.103 Petosjed: 2555x585x770(H) mm

Technical description

Dimensions: Izrađena je od cijevi 60x40 mm plastificiranih u boji po želji kupca. Sjedalo i naslon su plastični, drveni ili tapacirani prema želji kupca.



THREE CHAIRS SET

Product ID: 4007.180

Technical description

Construction: It is made of tubes 80x30 mm, plasticized in color according to the customer. The seat and backrest are one-piece, plastic.

Dimensions: 1550x585x770(H) mm



TABLE

Product ID: 4007.200

Technical description

Construction: Made of plastic pipes Ø28 mm. The top panel is 20 mm ultraplane, edged with wooden slats. Two drawers made of particle board, edged with ABS tape.

Dimensions: 1200x700x760(H) mm

Weight: 38 kg





SCREEN

Product ID: 4009.100

Technical description

Construction: It is made of Ø22 mm pipes, plastic coated in color of your choice. Canvas is cotton white or medical linen. There are Ø50 mm PVC wheels or PVC plugs at the end, depending on the customer's preference.

Dimensions: 500x1750(h) mm

Weight: 5 kg



TWO PART SCREEN

Product ID: 4009.101

Technical description

Construction: It is made of Ø22 mm pipes, plastic coated in color of your choice. Canvas is cotton white or medical linen. There are Ø50 mm PVC wheels or PVC plugs at the end, depending on the customer's preference.

Dimensions: 1000x1750(h) mm

Weight: 8 kg



THREE PART SCREEN

Product ID: 4009.102

Technical description

Construction: It is made of Ø22 mm pipes, plastic coated in color of your choice. Canvas is cotton white or medical linen. There are Ø50 mm PVC wheels or PVC plugs at the end, depending on the customer's preference.

Dimensions: 1500x1750(h) mm

Weight: 11 kg



TELESCOPIC SCREEN CURTAIN

Product ID: 4009.103

Technical description

Construction: Made of Ø25 and Ø28 mm pipes, chromed or plastic coated.

Appendices: wall tiles.

Dimensions: At customer's request

Weight: 5 kg





AMBULANCE CABINET

Product ID: 4002.020

Technical description

Construction: Made of plastic coated cold-rolled sheet metal. The upper door is 6 mm brushed glass with locks. Below are four drawers mounted on telescopic ball guides.

Dimensions: 800x400x1900(H) mm

Weight: 85 kg



AMBULANCE CABINET

Product ID: 4019.210

Technical description

Construction: Made of 1.25 and 1mm plastic cold-rolled sheet metal, with 6mm brushed glass doors, four shelves and lock.

Dimensions: 600x400x1600(H) mm

Weight: 50 kg



MEDICINE CABINET

Product ID: 4002.021

Technical description

Construction: Made of cold-rolled sheet 1.25 mm thick and 1 mm thick, plastic coated or stainless steel. The upper door is made of brushed glass 6 mm with locks, and the lower door is cold-rolled sheet metal 1 mm with lock. In the upper part there are two shelves and in the lower one.

Dimensions: 800x400x1900(H) mm

Weight: 70 kg



GLASS DOOR MEDICINE CABINET

Product ID: 4002.022

Technical description

Construction: Made of cold-rolled sheet 1.25 mm and 1 mm, plastic or stainless steel. The door is brushed glass 6 mm with locks. Three shelves.

Dimensions: 800x400x1900(H) mm

Weight: 70 kg





WARDROBES, SINGLE WING

Product ID: 4002.030

Technical description

Construction: Made of 0.8 mm cold-rolled sheet, plastic coated in color. With a lock, there is a shelf with a clothes hanger in the upper part.

Dimensions: 350x500x1800(H) mm

Weight: 32 kg



WARDROBES, DUBLE WING

Product ID: 4002.031

Technical description

Construction: Made of 0.8 mm cold-rolled sheet, plastic coated in color. With a lock, there is a shelf with a clothes hanger in the upper part.

Dimensions: 700x500x1800(H) mm

Weight: 56 kg



WARDROBES, TRIPLE WING

Product ID: 4002.032

Technical description

Construction: Made of 0.8 mm cold-rolled sheet, plastic coated in color. With a lock, there is a shelf with a clothes hanger in the upper part.

Dimensions: 1050x500x1800(H) mm

Weight: 80 kg



METAL CABINET WITH 10 BOXES

Product ID: 4002.033

Technical description

Construction: Made of 0.8 mm cold-rolled sheet, plastic coated in color.

Dimensions: 800x500x1800(H) mm

Weight: 66 kg





METAL ARCHIVE CABINET

Product ID: 4002.041

Technical description

Konstrukcija: It is made of cold-rolled sheet 1.25 and 1 mm thick, plasticized in color according to the customer's wishes, with four shelves and a lock.

Dimensions: 800x400x1900 (H) mm

Weight: 75 kg



CONSUMABLES CABINET

Product ID: 4002.040

Technical description

Konstrukcija: It is made of cold-rolled sheet 1.25 and 1 mm thick, plasticized in color according to the customer's wishes, with three shelves and a lock.

Dimensions: 800x400x1900 (H) mm

Weight: 68 kg



METAL HANGING CABINET

Product ID: 4002.090

Technical description

Construction: It is made of cold-rolled sheet 0.8 mm thick, color-coated plastic according to customer requirements.

Dimensions: 800x350x450 (H) mm

Weight: 18 kg



METAL-GLASS HANGING CABINET

Product ID: 4002.091

Technical description

Construction: It is made of cold-rolled sheet 0.8 mm thick, plasticized in color according to customer's wishes. The door is made of brushed glass 6 mm.

Dimensions: 600x300x600(h) mm

Weight: 18 kg





HOME PHARMACY CABINET

Product ID: 4002.092

Technical description

Konstrukcija: It is made of cold-rolled sheet metal 0.8 mm thick, coated in a custom color.

Dimensions: 275x140x380 (H) mm

Weight: 5 kg



METAL CARD FILE

Product ID: 4002.010

Technical description

Konstrukcija: It is made of cold-rolled sheet 1 mm thick, plasticized in color according to the customer. In the upper part there is a lock for lo

Dimensions: 420x580x740 (H) mm

Weight: 30 kg



METAL CARD FILE

Product ID: 4002.011

Technical description

Konstrukcija: It is made of cold-rolled sheet 1 mm thick, plasticized in color according to the customer. In the upper part there is a lock for lo

Dimensions: 420x580x1045 (H) mm

Weight: 43 kg



METAL CARD FILE

Product ID: 4002.012

Technical description

Konstrukcija: It is made of cold-rolled sheet 1 mm thick, plasticized in color according to the customer. In the upper part there is a lock for locking drawers, mounted on telescopic ball guides.

Dimensions: 420x580x1350 (H) mm

Weight: 55 kg





METAL ARCHIVE SHELVES

Product ID: 4030.200

Technical description

Construction: The supports are made of 2 mm thick cold-rolled sheet metal and the shelves are made of cold-rolled sheet metal.

- 0.8 mm sheet metal.

Dimensions: 400x1000x2000 (H) mm

Weight: 42 kg



METAL ARCHIVE SHELVES

Product ID: 4030.201

Technical description

Construction: The supports are made of 2 mm thick cold-rolled sheet metal and the shelves are made of cold-rolled sheet metal.

- 0.8 mm sheet metal.

Dimensions: 400x3000x2000 (H) mm

Weight: 126 kg



TWO LEVELS RACK

Product ID: 4006.000

Technical description

It is made of 30x20 tubes, with two cold-rolled sheet metal shelves, 1 mm thick, reinforced in the middle and coated in color according to customer requirements. Four wheels.

Dimensions: 370x500x632(h) mm

Weight: 10 kg



FOUR LEVELS RACK

Product ID: 4006.001

Technical description

It is made of 30x20 tubes, with two cold-rolled sheet metal shelves, 1 mm thick, reinforced in the middle and coated in color according to customer requirements. Four wheels.

Dimensions: 370x500x1154(h) mm

Weight: 23 kg



Office Chairs

 **KF04-a**



 **KF05-a**



 **KF10**



 **R/D 01**



 **R/D 15**



 **R/D 16**



 **KS 12**



 **KS 01**



 **KS 17**



Office Furniture

 LS 03



 LS 06



 LS 07



 KLF04-b



 KLF04-a



 KLF01-b



 KLF01-a





KLF04-b



KLF03-a



PROGRAM „I”



VP 01



PROGRAM „O”



SZK 01



 PROGRAM „Q“



 PROGRAM „W“



 PROGRAM „H“



 VJ 01



 VJ 02



 VJ 03



Materials

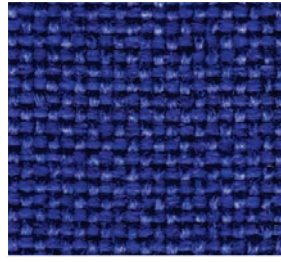
FABRICS



BLACK



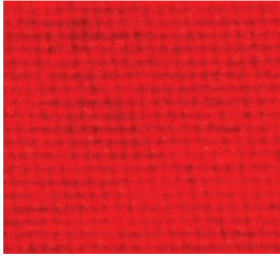
BROWN



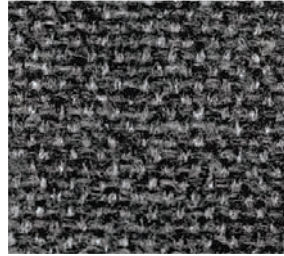
BLUE



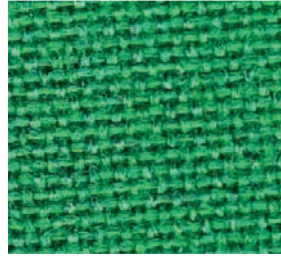
BORDEAUX



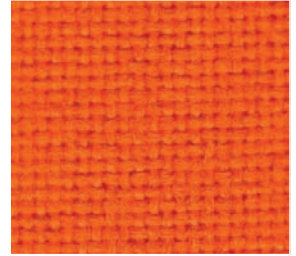
RED



GRAY



GREEN



ORANGE

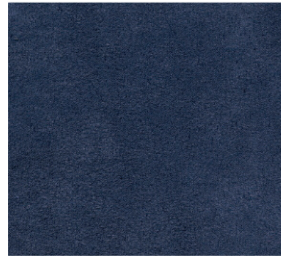
MICROFIBERS



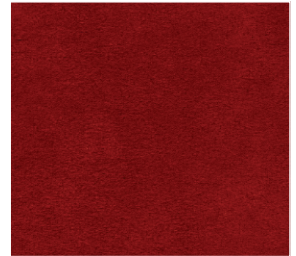
BLACK



BROWN



BLUE



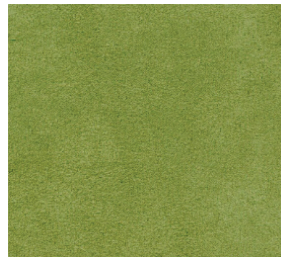
BORDEAUX



RED



GRAY

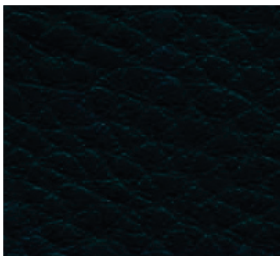


GREEN



ORANGE

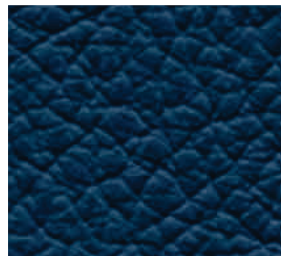
ECO - LEATHER



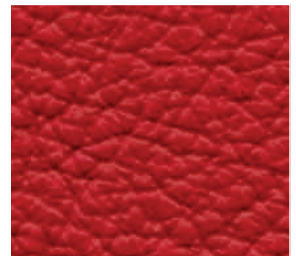
BLACK



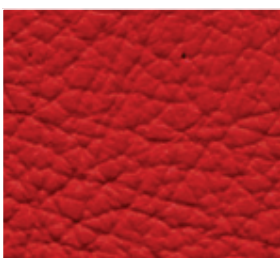
BROWN



BLUE



BORDEAUX



RED



GRAY



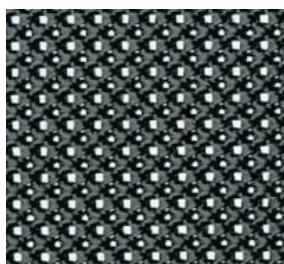
GREEN



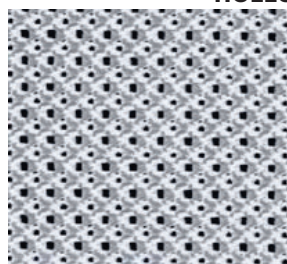
ORANGE

Materials

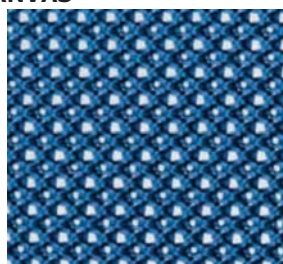
HOLLOW CANVAS



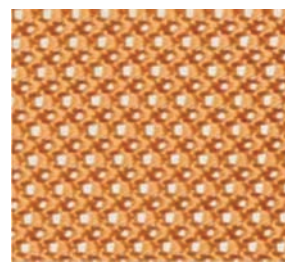
BLACK



WHITE

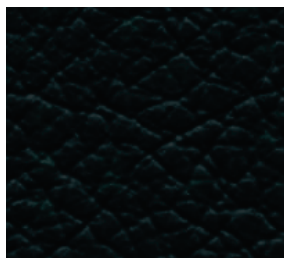


BLUE

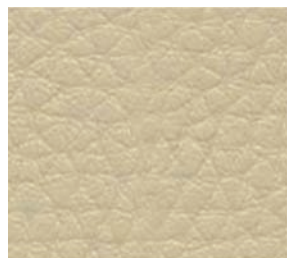


ORANGE

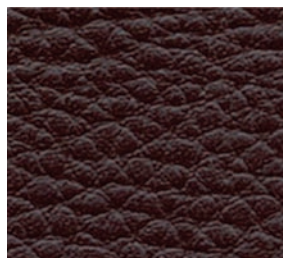
LEATHER



BLACK



BEIGE



BROWN

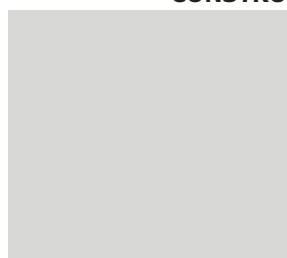


WHITE

CONSTRUCTION COLORS



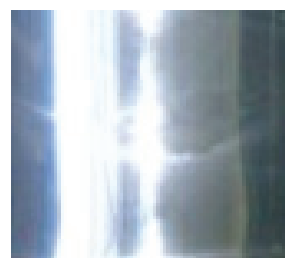
BLACK



GRAY



CHROME

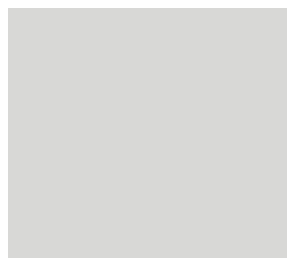


INOX

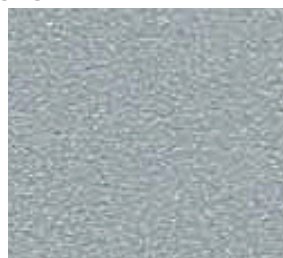
MDF COLORS



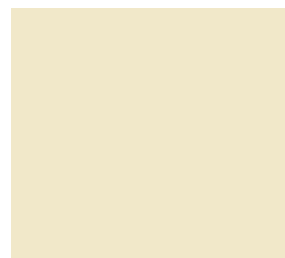
BLACK



GRAY



METALIK GRAY

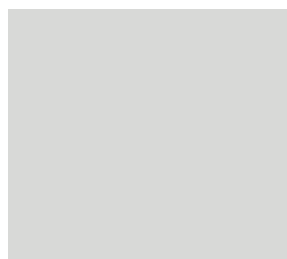


BEIGE

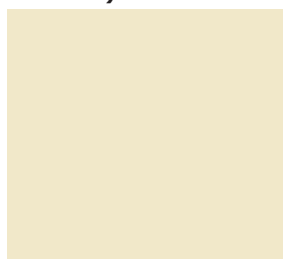
PB COLORS (MELAMINE)



BLACK



GRAY



BEIGE



WHITE



BAVARIAN BEACH



CHERRY



MAPLE



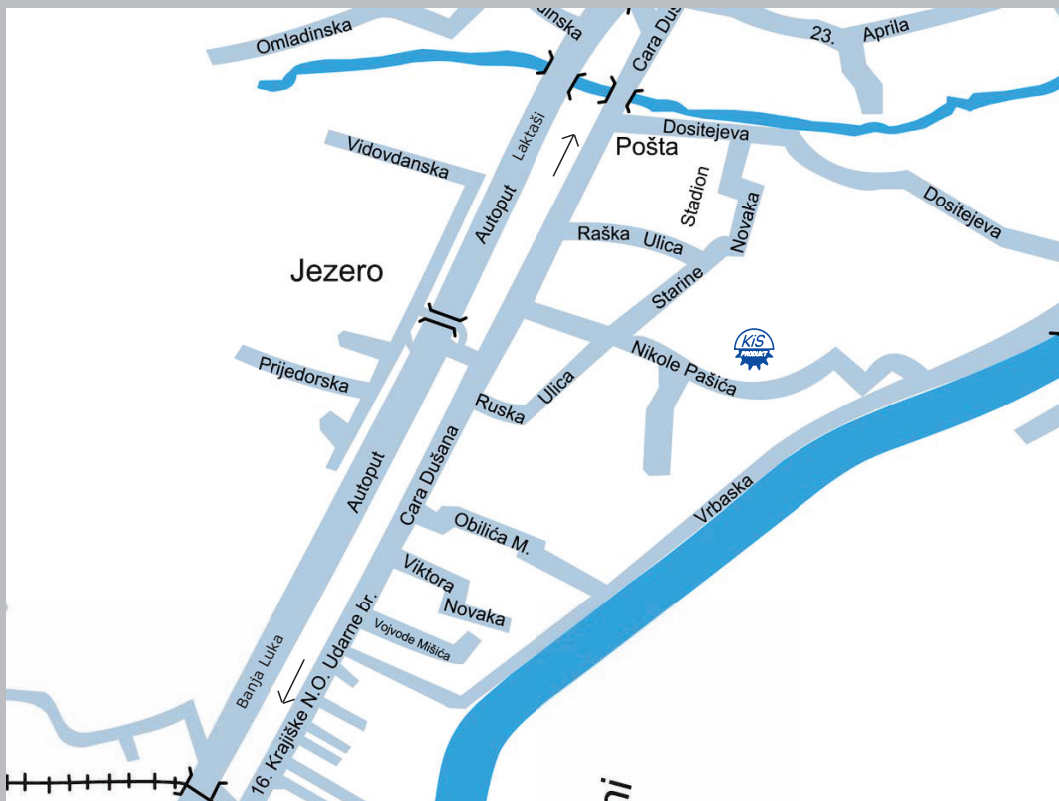
OAK



KIS-PRODUKT

www.kisprodukt.com

Nikole Pasica bb, Trn-Laktasi
Republic of Serbs - Bosnia and Herzegovina
Tel: +387 51 585 876,
Fax: +387 51 586 330
E-mail: info@kisprodukt.com
www.kisprodukt.com



Distributor:

Prepared with support:



USAID
FROM THE AMERICAN PEOPLE

